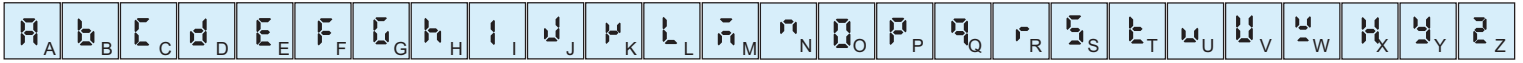


SPDL 7212

Submersible Panel Water level Controller

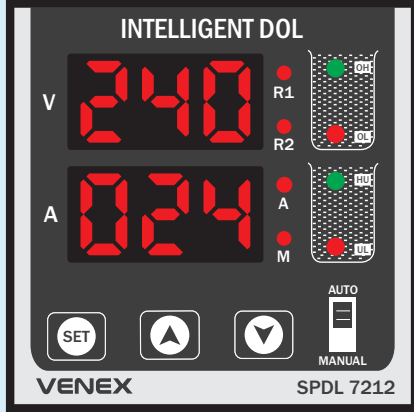
VENEX

Display Alphabet Characters



OPERATING MANUAL

FRONT PANEL



SPECIFICATION

- AUX. : 230 VAC, 50 Hz, ± 10%
- INPUT : Dual tank Water Level input (OH, OL, C, UH, UL) START - STOP Terminal.
- OUTPUT : 2 Relay (1For Starting 2nd For Running) (Reply 7 AMP), Resistive Load
- Operating Temp. : 0°C ~ 55°C
- Relative Humidity : Up to 95% RH Non Condensing
- Enclosure Material : Polycarbonate + ABS Plastic

STARTING MENU

- 255 Default Screen Use (▲) & (▼)
- 0L Over Load Ampere Use (▲) & (▼)
- 250 Use Up and down key Use (▲) & (▼)
- Save & Exit

TIME PARAMETER

- 230 Default Screen Use (▲) & (▼)
- 0FF Over Load Ampere Use (▲) & (▼)
- 043 Default Password Screen Use (▲) & (▼)
- 030 Enter Password 030 For Time Parameter Use (▲) & (▼)
- d15 Auto Mode Enable/Disable Use (▲) & (▼)
- n0n Mode Selection Use (▲) & (▼)
- 003 Relay-2 Time (In Second) Use (▲) & (▼)
- n0 Memory Retain Use (▲) & (▼)
- 025 Auto OL & DRY In Percentage Setting Use (▲) & (▼)
- Save & Exit

AMPERE PARAMETER

- 230 Default Screen Use (▲) & (▼)
- 0FF Over Load Ampere Use (▲) & (▼)
- 043 Default Password Screen Use (▲) & (▼)
- 070 Enter Password 070 For Time Parameter Use (▲) & (▼)
- 300 Max. Ampere Limit Setting Use (▲) & (▼)
- 00 Start Delay Time Setting Use (▲) & (▼)
- 005 Ampere Delay Time Setting Use (▲) & (▼)
- d15 Dry Run Enable/Disable Use (▲) & (▼)
- 000 Ampere Offset Value Setting Use (▲) & (▼)
- Save & Exit

VOLTAGE PARAMETER

- 230 Default Screen Use (▲) & (▼)
- 0FF Over Load Ampere Use (▲) & (▼)
- 043 Default Password Screen Use (▲) & (▼)
- 090 Enter Password 090 For Time Parameter Use (▲) & (▼)
- d15 High Voltage Enable/Disable Use (▲) & (▼)
- 00 Low Voltage Enable/Disable Use (▲) & (▼)
- 005 Voltage Delay Time Setting Use (▲) & (▼)
- 000 Voltage Offset Value Setting Use (▲) & (▼)
- Save & Exit

- PP5 Password
- n0n Auto Mode
- n0d Mode Selection
- d15 Function Disable
- d14 Delay Time

- HU High Voltage
- LAt Limit For Ampere Setting
- Std Start Delay Time (Initial Delay)
- AOV Ampere Offset Value
- LU Low Voltage

- UOF Voltage Offset
- n0n None Mode
- r-2 Relay-2 Time
- PER Percentage Setting