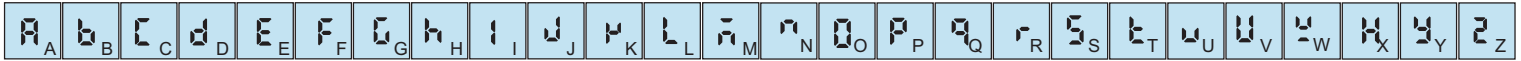


## Display Alphabet Characters



## OPERATING MANUAL

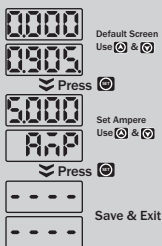
### FRONT PANEL



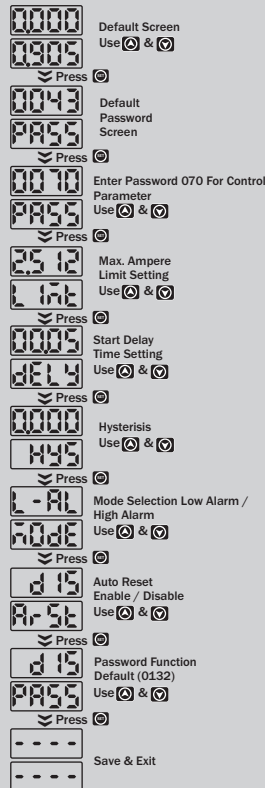
### SPECIFICATION

AUX. : 230 VAC, 50 Hz,  $\pm 10\%$   
 Accuracy :  $\pm 1\%$  of FSD  
 Operating Temp. : 0°C ~ 55°C  
 Relative Humidity : Up to 95% RH Non Condensing  
 Enclosure Material : Polycarbonate + ABS Plastic  
 INPUT : 300 mA To 30AMP AC thru.  
 external CBCT  
 OUTPUT : 1 Relay (NO-C-NC) 5A,  
 230V AC (resistive load)

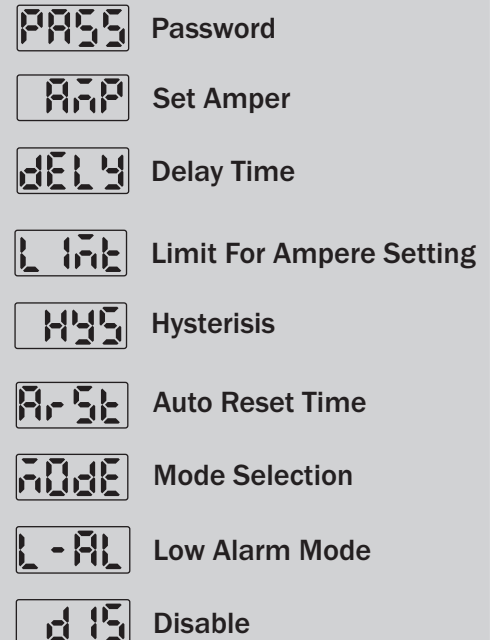
### STARTING MENU



### CONTROL PARAMETER

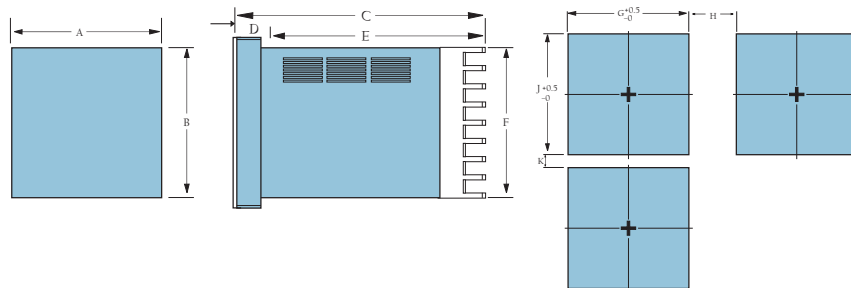


### PARAMETER MEANING



### MOUNTING

The controller can be mounted on either a vertical or tilted panel using the mounting bracket supplied. Adequate access space must be available at the back of the panel for installation and servicing activities. Overall dimensions and panel cutout requirements for mounting the controller are shown in Figure



Size	A	B	C	D	E	F	G	H(Min)	J	K(Min)
(96 x 96)	96	96	66	3	63	90.3	92	25	92	25