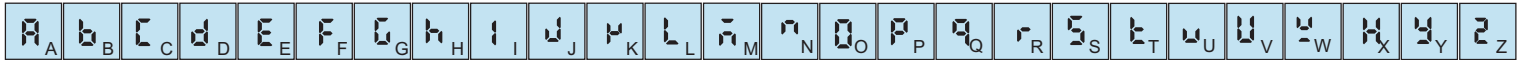


Display Alphabet Characters



OPERATING MANUAL

FRONT PANEL



SPECIFICATION

- AUX. : 230 VAC, 50 Hz, $\pm 10\%$
- Accuracy : $\pm 1\%$ of FSD
- Operating Temp. : $0^{\circ}\text{C} \sim 55^{\circ}\text{C}$
- Relative Humidity : Up to 95% RH Non Condensing
- Enclosure Material : Polycarbonate + ABS Plastic
- INPUT : 300 mA To 30AMP AC thru. external CBCT
- OUTPUT : 1 Relay (NO-C-NC) 5A, 230V AC (resistive load)

CONTROL PARAMETER

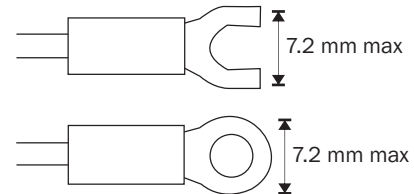
- 0000 Default Screen
Press 5 Second
- PASS Password Setting
Press
- 0043 Enter Password 0070 For Parameter Use () & ()
Press
- L 1A2 Ampere Limit Setting
Press
- 2500 Set Ampere limit value Use () & ()
Press
- dELY Delay Time
Press
- 0005 Set Delay Time (Sec) Use () & ()
Press
- HYS Hysterisis
Press
- 0000 Set Hysterisis value Use () & ()
Press
- ADDE Mode selection
Press
- L-AL Alarm Mode High / Low Use () & ()
Press
- AUTO Auto Reset Mode
Press
- d 15 Auto Reset Enable / Disable Use () & ()
Press
- PASS Password Setting
Press
- Enb Parameter setting Password Enable / Disable Use () & ()
Press
- - - Save & Exit

CONTROL PARAMETER

- PASS Password
- AAAP Set Amper
- dELY Delay Time
- L 1A2 Limit For Ampere Setting
- HYS Hysterisis
- ArSe Auto Reset Time
- ADDE Mode Selection
- L-AL Alarm Mode

PRECAUTIONS WHEN WIRING

- Separate input leads and power lines in order to prevent external noise.
- Use specified size (M3.5, width 7.2 mm or less) crimped terminals for wiring. To connect bare wires to the terminal block, use copper braided or solid wires with a rated temperature of over 70°C and a gauge of AWG24 to AWG14 (equal to a cross-sectional area of 0.205 to 2.081 mm²). (The stripping length is 5 to 6 mm.) Up to two wires of same size and type, or two crimped terminals can be inserted into a single terminal.
- Use crimp terminals when wiring the terminals.
- Use the suitable wiring material and crimp tools for crimp terminals.
- Tighten the terminal screws to between 0.74 and 0.90 N-m.
- Use the following types of crimp terminals for M3.5 screws.



MOUNTING

The controller can be mounted on either a vertical or tilted panel using the mounting bracket supplied. Adequate access space must be available at the back of the panel for installation and servicing activities. Overall dimensions and panel cutout requirements for mounting the controller are shown in Figure

